



648-83

### Brass Ball Valve

#### Press-Fitting Connection

- Chrome-plated ball, blowout-proof stem
- Lead-free solder joint
- ANSI/NSF 61
- C-377 forged brass

**Related Products**

Fit Quick coupling

p 212



Item No	Connection	Length	Pkg	Min Qty	Case Qty
648-82	1/2" press-fitting	6 1/8"	B	10	10
648-83	3/4" press-fitting	7 1/4"	B	10	10
648-84	1" press-fitting	8 1/2"	B	10	10



111-23

### Brass Stop & Waste Valve

#### Female Sweat Connection

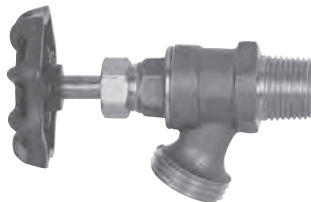
- Brass valve body with stuffing box, neoprene seals
- ANSI/NSF 61

Item No	Connection	Pkg	Min Qty	Case Qty
111-22	1/2" FSWT	B	10	100
111-23	3/4" FSWT	B	10	100

### Brass Boiler Drain

#### MIP × Female Sweat Connection

- Male hose thread spout
- With stuffing box
- ANSI/NSF 61
- Neoprene seal



113-33

Item No	Description	Pkg	Min Qty	Case Qty
113-32	1/2" MIPs × 1/2" FSWT	B	10	10
113-33	3/4" MIPs	B	10	100